



**PORT OF
HANKO**

Development of port capacity for integrated Baltic MoS link(s) on Rostock -Hanko

- The shortest direct sea connection between Germany and Finland
- Larger vessels and higher volumes
- Increase handling safety and efficiency



**PORT OF
HANKO**



Euroopan unionin osittain rahoittama
Verkkojen Eurooppa -väline

www.portofhanko.fi



FINNLINES' INVESTMENT PROGRAMME IN ACTION

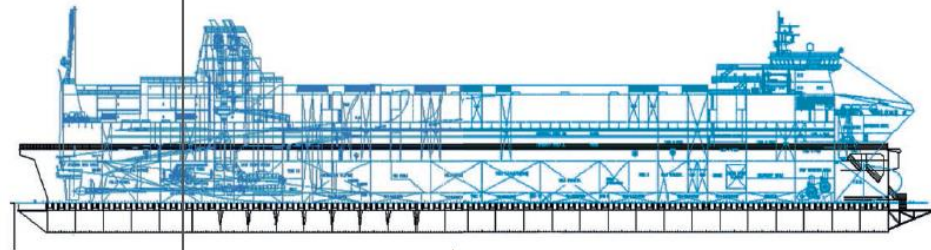
INCREASING LANE METRES

VESSELS

- MS Finnsky
- MS Finnsum
- MS Finnide
- MS Finnwave
- + and an option of two additional vessels

Around 1 km of trucks more per ship hosted on board.

30% capacity increase will considerably reduce the energy consumption per transported unit.



The whole lengthening programme will be completed in May 2018.

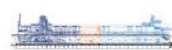
HOW IS IT DONE? MAINSTAGES



1 Cutting the vessel



3 Adding the insert



3 Welding all sections together

PROMOTING SUSTAINABILITY



Optimisation of schedules



Fuel monitoring



Better speed management



Brushing of ship's bottom and hull



Optimum trim and ballast

ENVIRONMENTALLY SUSTAINABLE TRANSPORT MODE



8 trains



250 trucks



1 Breeze-vessel

COMPARISON OF DIRECT AND INDIRECT COSTS* ON A TRADITIONAL LONG ROUTE

*accidents, mileage, emissions, shipping costs, noise, congestion

DIRECT AND INDIRECT COSTS PER TRAILER



TRAIN

€ 2,622



TRUCK

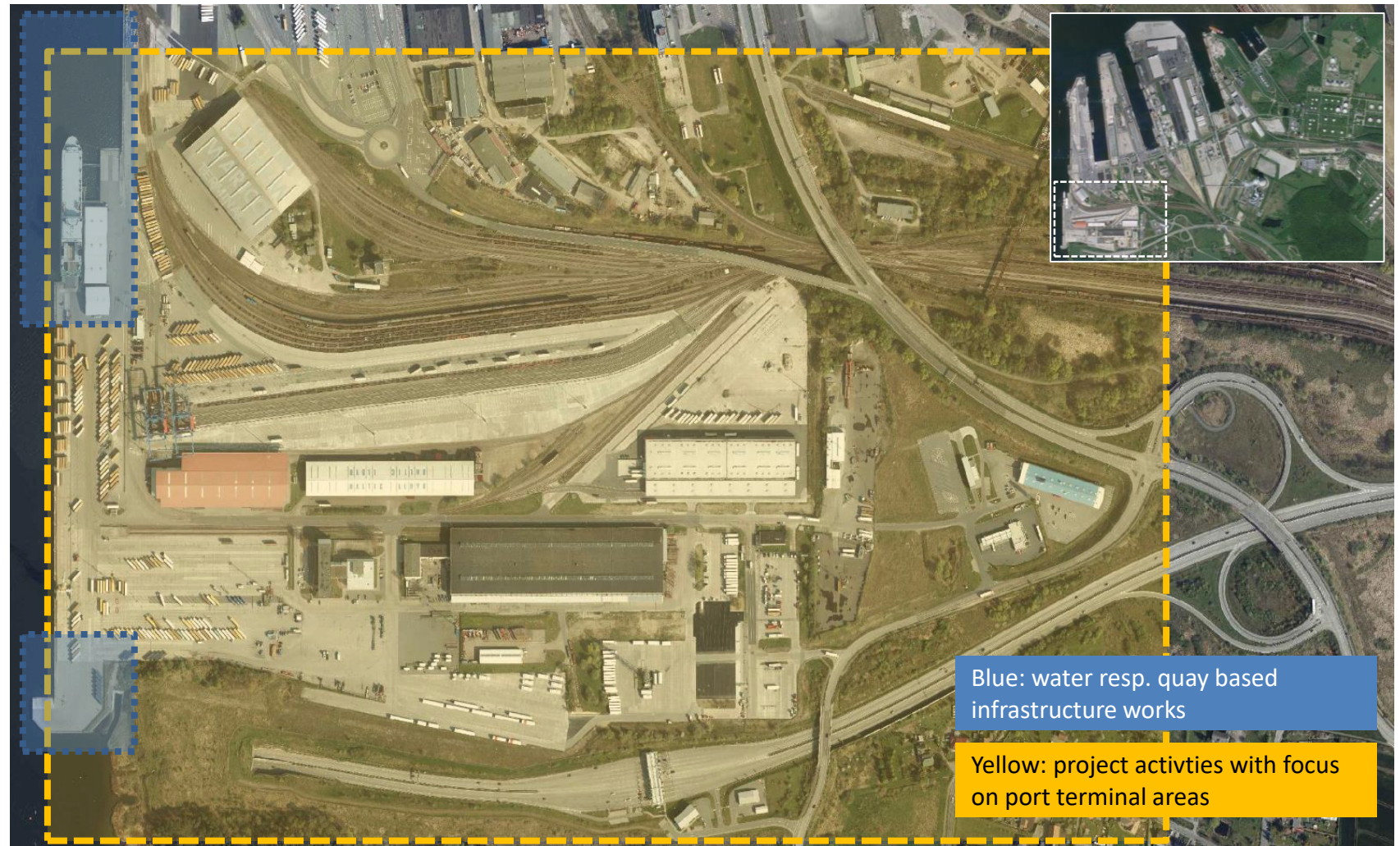
€ 3,275

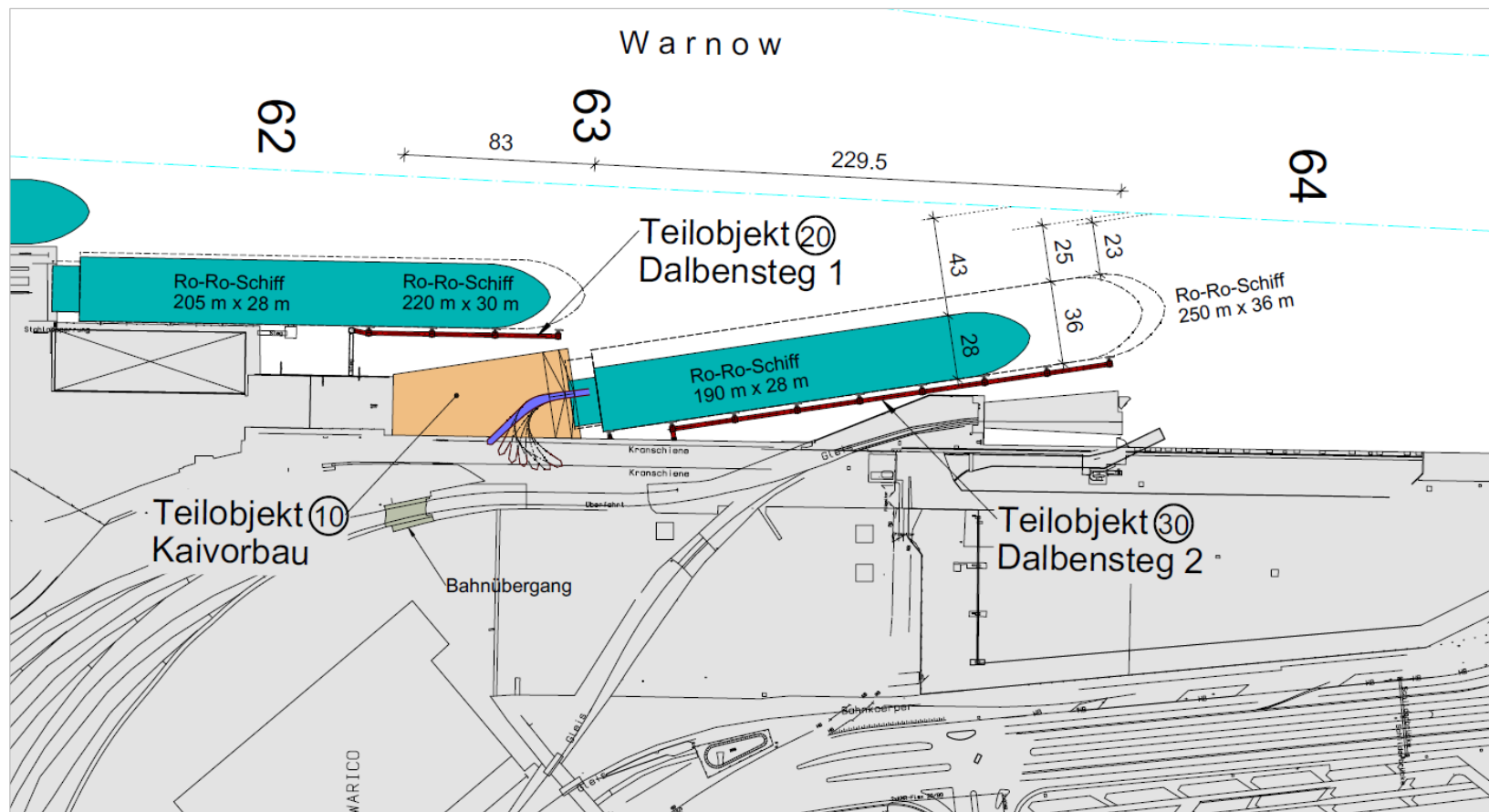


BREEZE-VESSEL

€ 1,719

Source: D'Appolonia consulting, design, operation & maintenance engineering (October 2015)





Von der Europäischen Union kofinanziert
Fazilität „Connecting Europe“

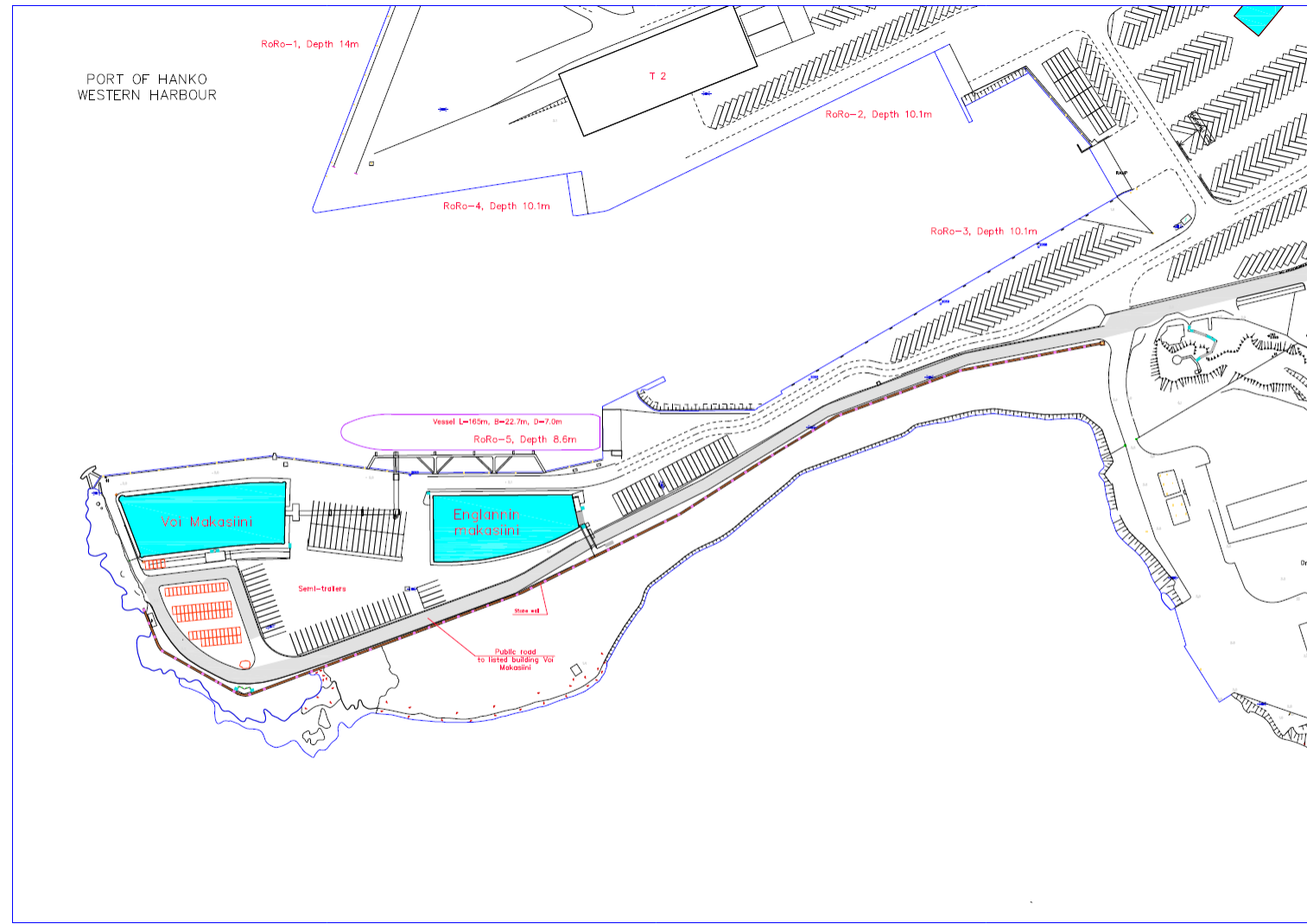




Project activities in the Port of Rostock

- completely new built ro/ro-berth LP63 and adaptation of existing ro/ro-berth LP62
- adaptation and construction is done for lengthened vessels (up to 220m) deployed on the link Rostock - Hanko by Finnlines
- new construction and re-construction of port terminal areas on the ro/terminal
- area development includes demolition of buildings and no longer suitable infrastructures
- development of former green areas into terminal handling and traffic areas to cope with increased transport demand between Finland and the continent
- erection and installation of scanning facilities in order to improve safety, security and reliability of transport flows for the port operator, maritime operator and owner of the transport unit

Western Harbour, before



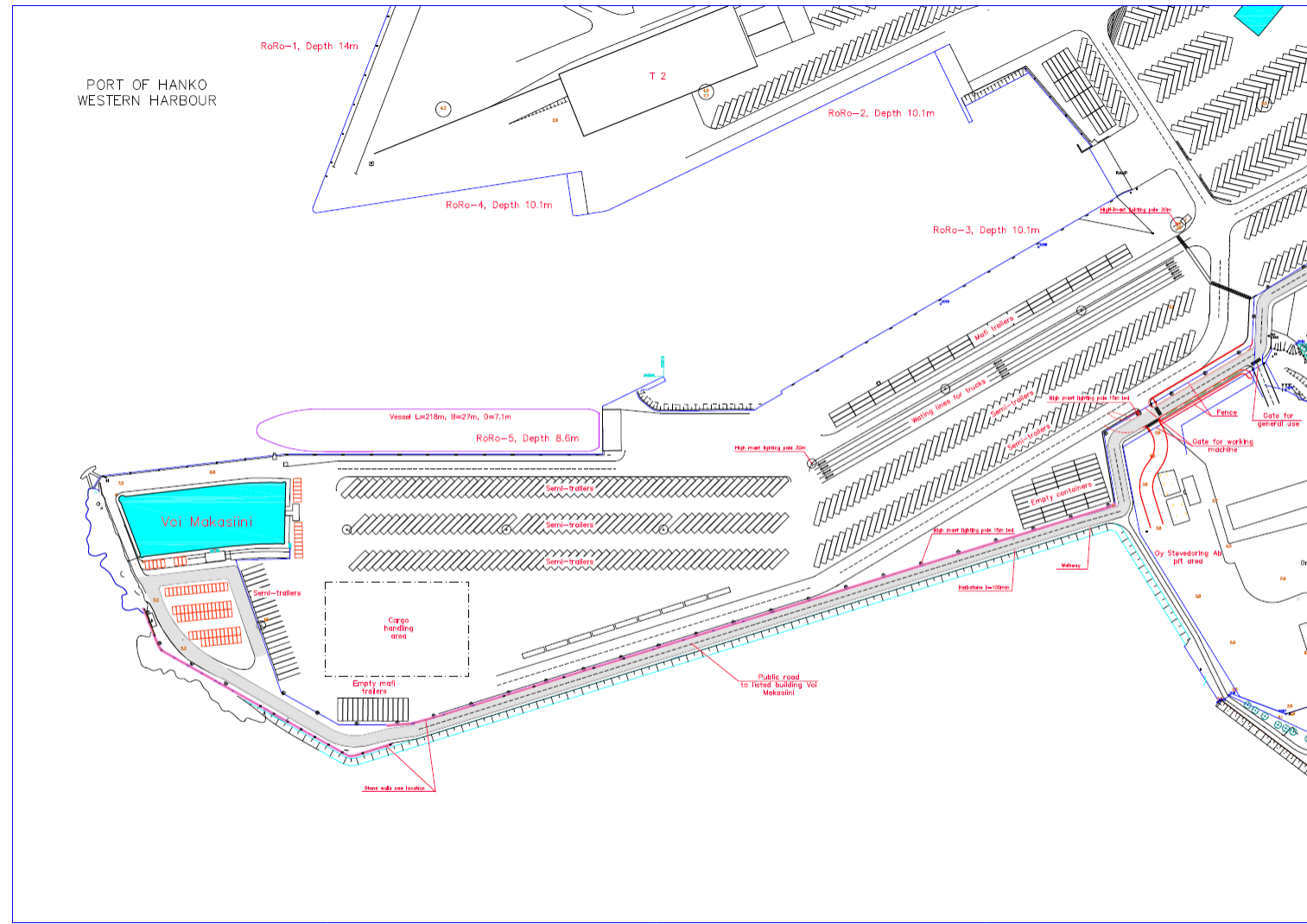
**PORT OF
HANKO**



Euroopan unionin osittain rahoittama
Verkkojen Eurooppa -väline

www.portofhanko.fi

Western Harbour, after



**PORT OF
HANKO**



Euroopan unionin osittain rahoittama
Verkkojen Eurooppa -väline

www.portofhanko.fi



**PORT OF
HANKO**



Euroopan unionin osittain rahoittama
Verkkojen Eurooppa -väline

www.portofhanko.fi



**PORT OF
HANKO**



Euroopan unionin osittain rahoittama
Verkkojen Eurooppa -väline

www.portofhanko.fi