



2017 CEF Transport Blending Call

1st cut-off date

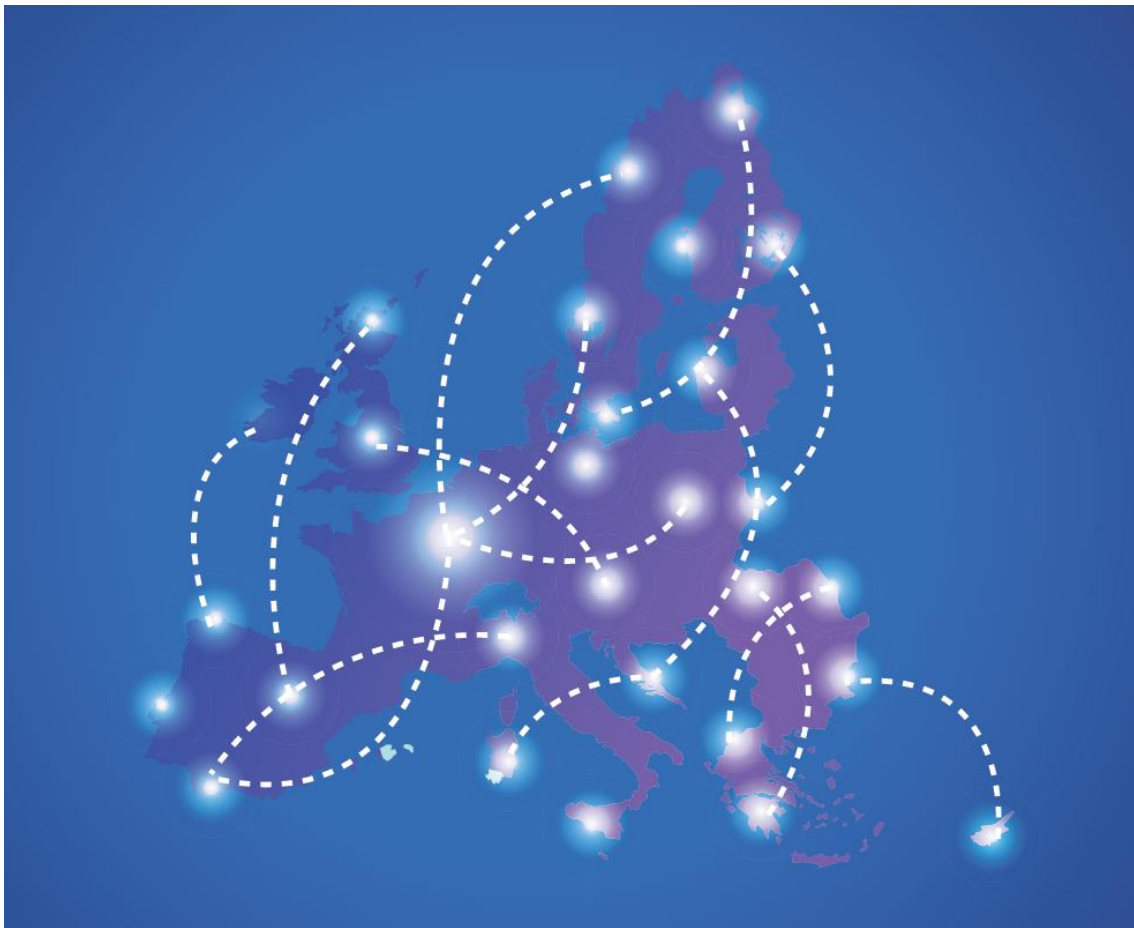
Outcome of the Evaluation and update on the 2nd cut-off date

INEA, Information to beneficiaries, Finland
13 December 2017

Morten JENSEN

INEA, acting Head of Unit, C1 Unit

2017 CEF Transport Blending Call



€1.02 billion for projects of common interest in the transport sector aiming at maximising the leverage of private involvement and capital in the delivery of CEF Transport projects

2017 CEF Transport Blending Call

Priorities and indicative budget

FO1 - €700 million	FO2 - €500 million*	FO3 - €150 million
Core Network Corridors € 400 million	Innovation and new technologies €490 million*	Single European Sky €40 million
Other sections of the Core Network € 400 million		Intelligent Transport Services for road €40 million
Rail interoperability €50 million	Safe and secure infrastructure €10 million	Motorways of the Sea €40 million
ERTMS €100 million		Nodes Core Network €10 million
	<i>* As modified by the Corrigendum adopted on the 8 November 2017</i>	Multimodal logistics platforms €20 million

2017 CEF Transport Blending

€1.02 billion invested in 39 projects

(€ billion)

2.2
(65)

1.7
(41)

1.02
(39)

1

€4.5 billion
total
investment

Eligible Proposals

Recommended proposals
(External evaluation)

Recommended proposals
(Internal evaluation)

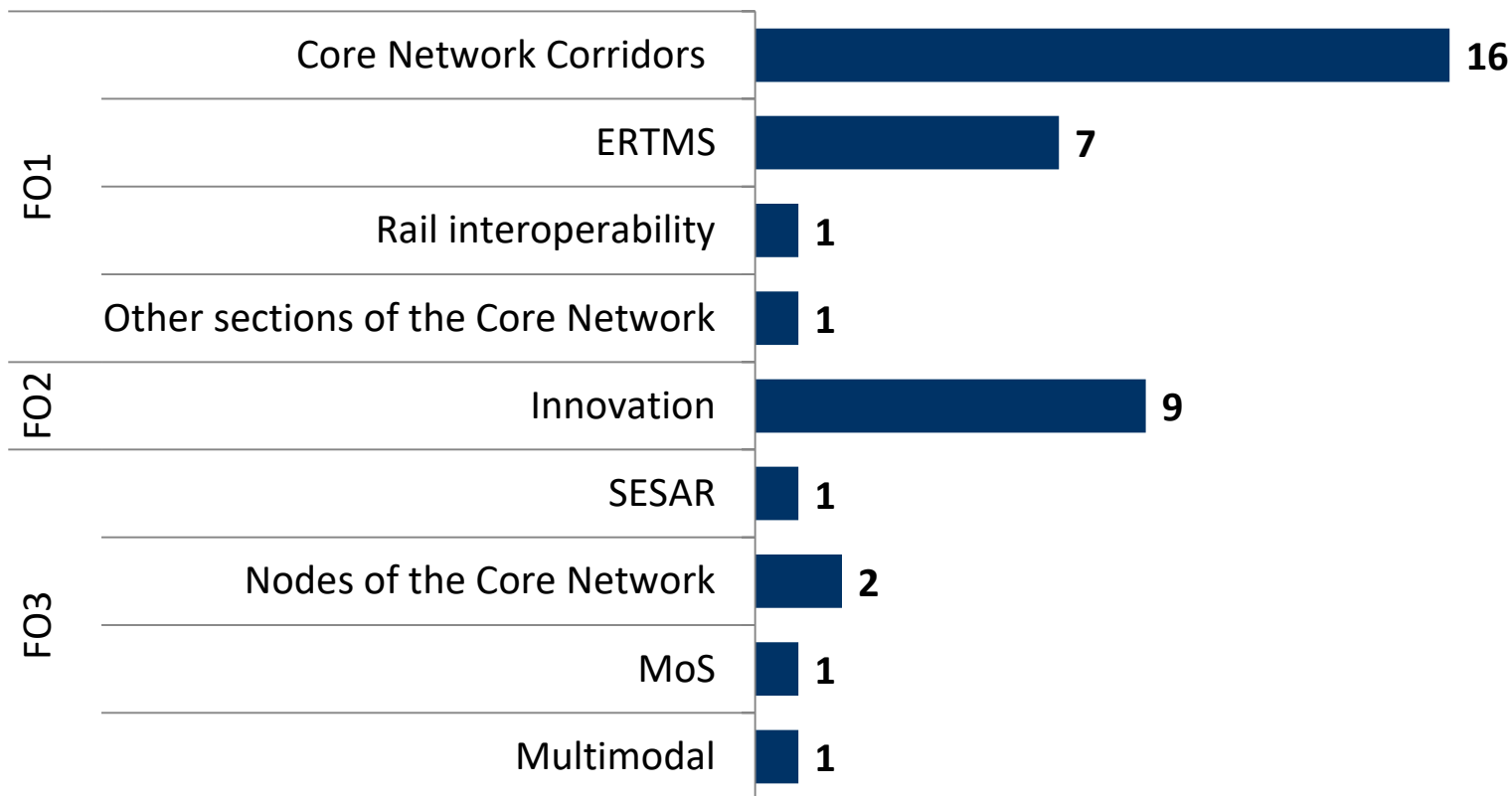
Indicative
budget 4

2017 CEF Transport Blending Recommended proposals

Priority	Number of eligible proposals	Requested funding, €	Number of proposals recommended for funding	Recommended funding, €
Core Network Corridors	24	1,450,801,578	16	672,480,245
Other sections of the Core	1	5,377,600	1	4,477,600
Rail interoperability	2	23,576,800	1	7,276,800
European Rail Traffic Management System (ERTMS)	10	397,051,669	7	190,876,225
Innovation and new technologies	15	175,954,120	9	116,591,261
Safe and secure infrastructure	/	/	/	/
Single European Sky - SESAR	2	18,326,765	1	10,948,265
Intelligent Transport Systems for Road (ITS)	/	/	/	/
Motorways of the Sea (MoS)	1	6,222,169	1	4,338,889
Nodes of the Core Network	7	81,798,771	2	10,646,579
Multimodal logistics platforms	3	13,455,256	1	2,114,129
Grand Total	65	2,172,564,728	39	1,019,749,993

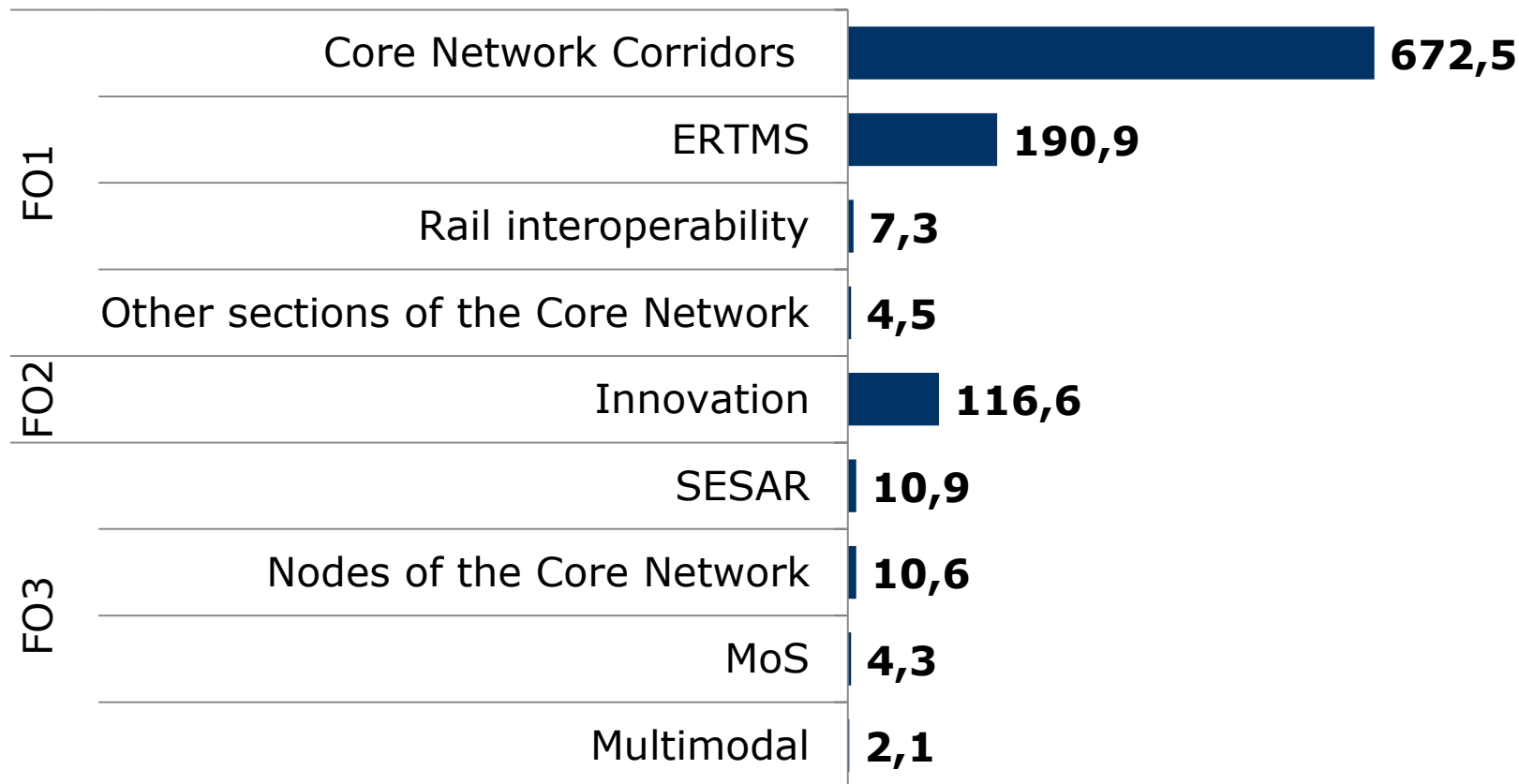
2017 CEF Transport Blending

Number of selected Proposals / Priority

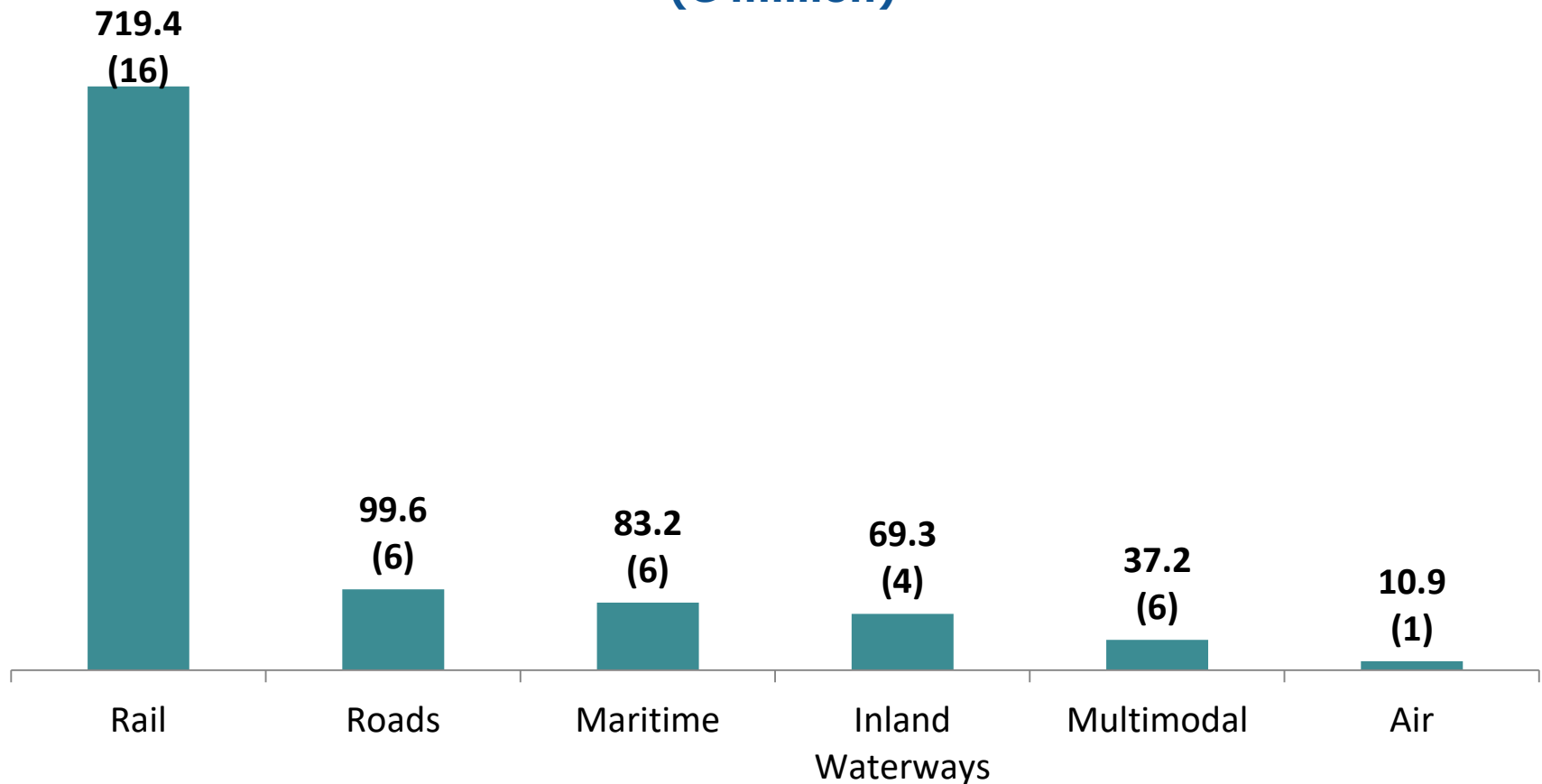


2017 CEF Transport Blending

Recommended funding selected Proposals / Priority (€ million)



2017 CEF Transport Blending Funding per transport mode (€ million)



2017 CEF Transport Blending Call

2nd cut-off date: Corrigendum of 8 November 2017

- **New deadline** → 12 April 2018
- **Budget** → "Innovation and New technologies" (from €140 to €490 million) – Total budget from €1 Billion to €1,35 billion
- **Size of projets** → "Innovation and New technologies", minimum total eligible costs in excess of €5 million from €10 million
- **EFSI approval** → proposals under the "Innovation and New Technologies" priority will also be exempted from the conditionality on grant disbursement associated with EFSI approval.

Selected Call Priorities

Innovation - Actions supported

Type of Actions	Support rate
Works	Maximum 20% Must be supported by a CBA

"Innovative solutions deployed on:

- a significant part of the Core Network
- emphasis on Core Network Corridors".

"Should include cost estimation to perform an ex-post Climate Impact Assessment of the Action"

Innovation - Actions supported

Contributing to decarbonisation of transport by the roll-out of Alternative Fuel Distribution infrastructure

- ✓ *Electricity (electro-mobility)*
- ✓ *Hydrogen*
- ✓ *Compressed or Liquefied Natural Gas (L/CNG)*
- ✓ *Priority to Bio-methane*
- ✓ *Other: incl. IT systems, storage, transportation units, ...*

Innovation - Eligibility

- ✓ Mobile equipment (i.e. vehicles)



- *For CEF Grant only the financial difference usual/conventional solution*

- ✓ Mobile infrastructure (i.e. concerning moving parts of infrastructure)



- *Detailed description even if support not requested*

- ✓ Interface between infra & vehicle

- *5 years in the EU*
- *Scrubbers are not eligible*

Maritime Ports: Supported Actions

Hinterland connections to the Core Network (rail, inland waterway or road if other hinterland connections are not an option) with adequate capacity and efficiency

Port access aiming at providing safe maritime access in the form of breakwaters, capital dredging activities, access channels, locks and navigational aids

Basic infrastructure in the form of internal basins, quay walls, jetties, backfills and land reclamation

Reception facilities for oil and other waste, including residues from exhaust gas cleaning systems, to meet environmental requirements

Implementation of new facilities & technologies regarding use of alternative energy, e.g. LNG bunkering, shore-side electricity, etc., in line with the Directive 2014/94/EU, **excluding any pilot actions**

Specific conditions

Not supported: maintenance, infrastructure and facilities for cruise ships, infrastructure dedicated exclusively to private operators without public access

Supported via financial instruments ONLY: construction and expansion of terminals, and superstructure

Works: based on 1) proper assessment of needs, incl. of competition at regional/basin level, and 2) a long term strategy with adequate hinterland connections. To be reflected in the CBA!

Studies: NOT supported

Co-funding rate: 20%

MoS – Specific Conditions ^{1/2}

- ✓ Submission by at least two applicants from two different Member States (and support of those)
- ✓ Upgrade of maritime link: Involvement of at least 1 core port, 1 comprehensive port and 1 maritime operator on the link concerned
 - Only dedicated lines serving the applying ports
 - Vessel upgrades are limited to the additional efforts environmental purposes or other ancillary investments
 - Ships to serve the MoS line for 5 years after end of Action
 - Significant port investments of at least 50% of project budget

MoS – Specific Conditions 2/2

- ✓ Superstructures: not supported with grants (possible with financial instruments, however the fulfilling requirements for infrastructure investments in **both ports** remains!)
- ✓ No support for fleet of vessels (including aggregated applications from the same ship-owner)
- ✓ Project extension to a neighbouring non-EU country not possible under this Call (studies/pilot actions not eligible for funding/financing)
- ✓ For large multi-beneficiary projects, recommended submission by European Economic Interest Groupings



INEA-CEF-Transport-blending@ec.europa.eu



<http://ec.europa.eu/inea>



@inea_eu



Look for INEA!

Thank you!